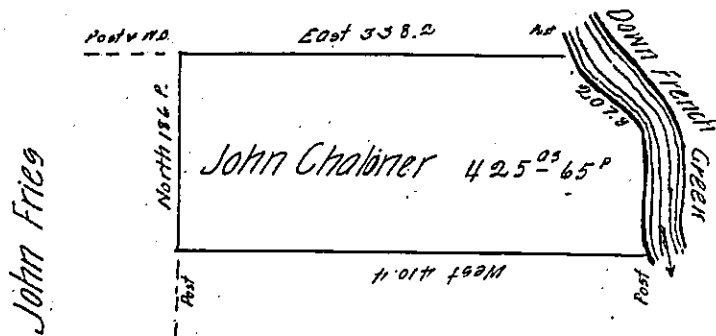


Gro. Fox

River Course  
9.36' #E. 57.2  
9.46' E. 32  
9.7' E. 96  
9.10' E. 226  
207.8 P.



Hugh Logue

Situate on the West side of French Creek in Alley County Containing 42.5<sup>05</sup> 65<sup>25</sup>  
and Allowance of Six p. Cent for Roads &c. Surveyed the 6<sup>th</sup> Day of October  
1794. In pursuance of a Warrant Dated the 13<sup>th</sup> Day of April 1792.

Wm Power D.Y. 95

To Danl Brodhead Esqr.  
Surveyor General

IN TESTIMONY that the above is a copy of the original remaining on file in  
the Department of Internal Affairs of Pennsylvania, made  
conformably to an Act of Assembly approved the 16th day of  
February, 1833, I have hereunto set my Hand and caused  
the Seal of said Department to be affixed at Harrisburg,  
this Eighteenth day of April 1904

*James P. Brown*  
Secretary of Internal Affairs.